

# Perfect Fit Pleated Blind

## Assembly, fitting, operation and maintenance instructions

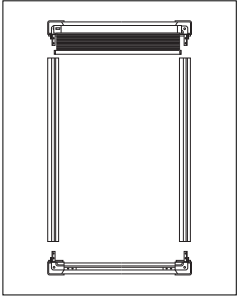
**Warning!** The operating instructions must be read before operating the blind.

### Assembly Instructions for Perfect Fit Pleated Blind

This procedure can be completed by non-professionals.

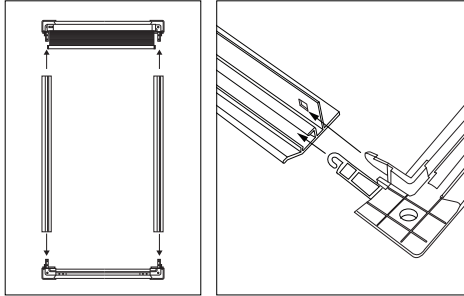
#### Step 1 - Prepare the blind

Carefully unpack all parts of the blind and lay them out face down on a clean, even surface. Ensure all components are present before beginning assembly.



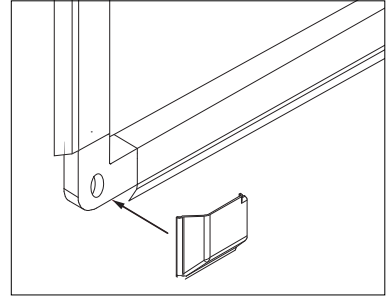
#### Step 2 - Assemble the frame

Insert the side frame components onto the exposed arms of the bottom corner joints, then follow the same procedure with the top frame component to complete the frame assembly.



#### Step 3 - Fit the corner covers

Turn the assembled frame face up and clip the supplied frame corner covers onto each corner joint to complete the frame assembly.

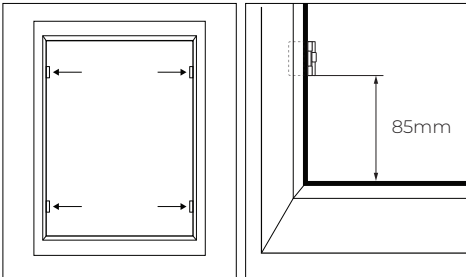


### Fitting Instructions for Perfect Fit Pleated Blind

This procedure can be completed by non-professionals.

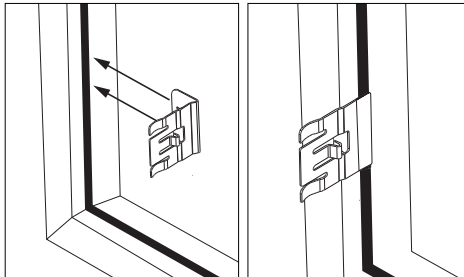
#### Step 1 - Mark bracket positions

To ensure all brackets are correctly positioned for fitting, measure 85 mm from the top and bottom beading on both sides of the window frame. Mark these points to guide bracket placement.



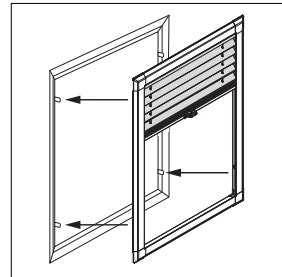
#### Step 2 - Install the brackets

Fit each bracket by gently pushing it between the glass and the rubber seal of the window until it is securely in place.



#### Step 3 - Attach the blind frame

Once all brackets are securely in place, clip your Perfect Fit blind onto the window frame, ensuring it clicks firmly into position.



### Operation & Maintenance

**Warning!** The operating instructions must be read before operating the blind.

#### Operating instructions for manual Perfect Fit Pleated Blinds

Use the bottom bar operating handle to move the blind to the desired position. Pull the handle downward to close the blind or push it upward to open it.

#### Operating instructions for motorised Perfect Fit Pleated Blinds

Use the supplied control device to operate the blind electronically. For detailed information on operating modes, please refer to the Motorisation Instructions supplied with this blind before use.

#### Maintenance Instructions

This product is designed to be maintenance-free; however, we recommend carrying out regular visual inspections to ensure that no components are damaged, as this could lead to operating difficulties or pose a safety risk. If any maintenance is required, it should be completed promptly by a reputable blind company.